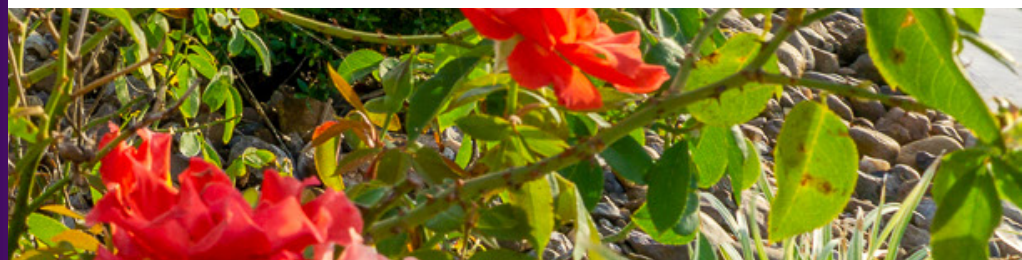
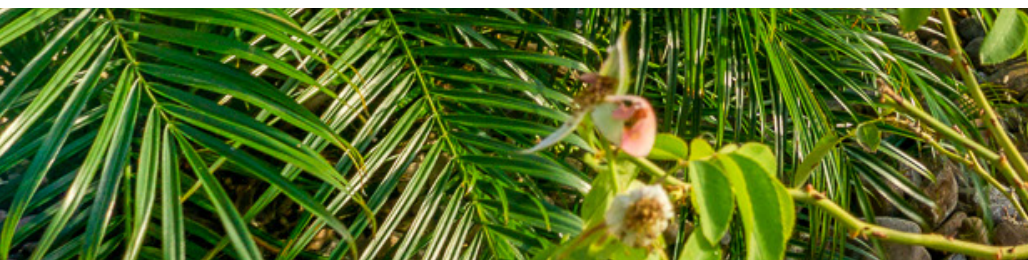
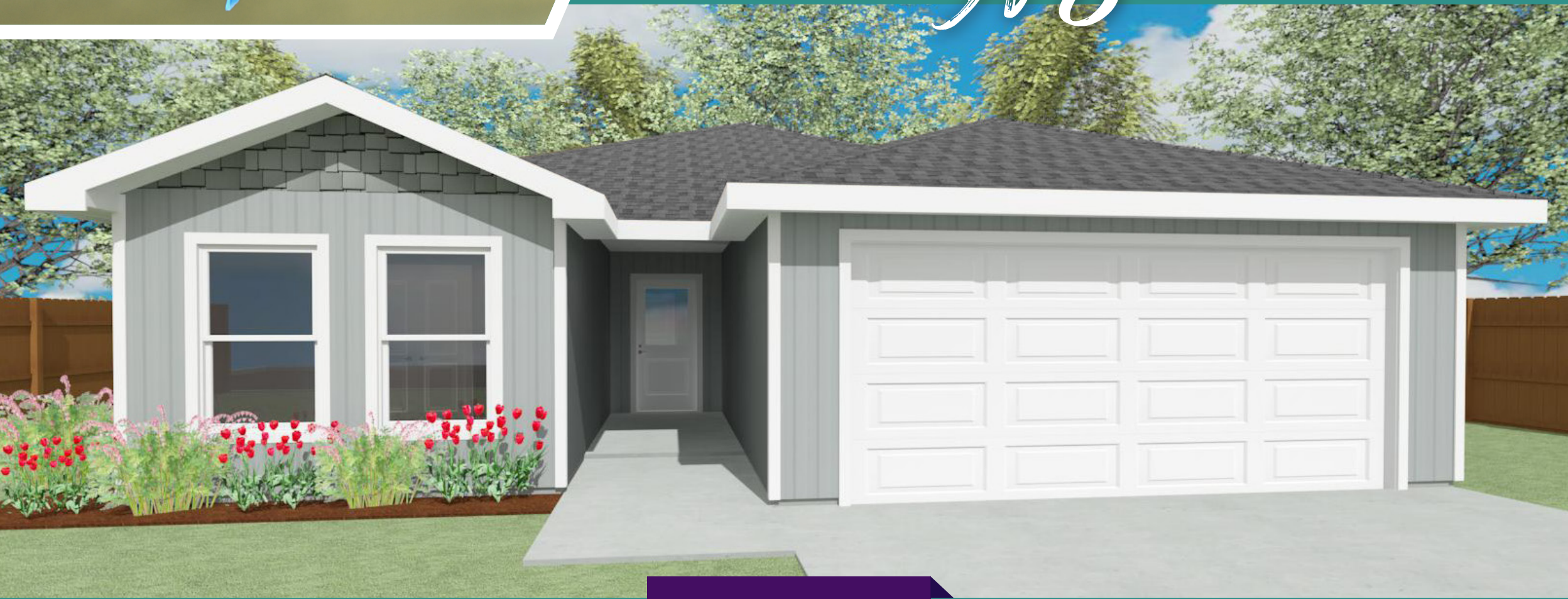




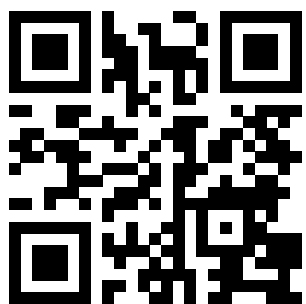
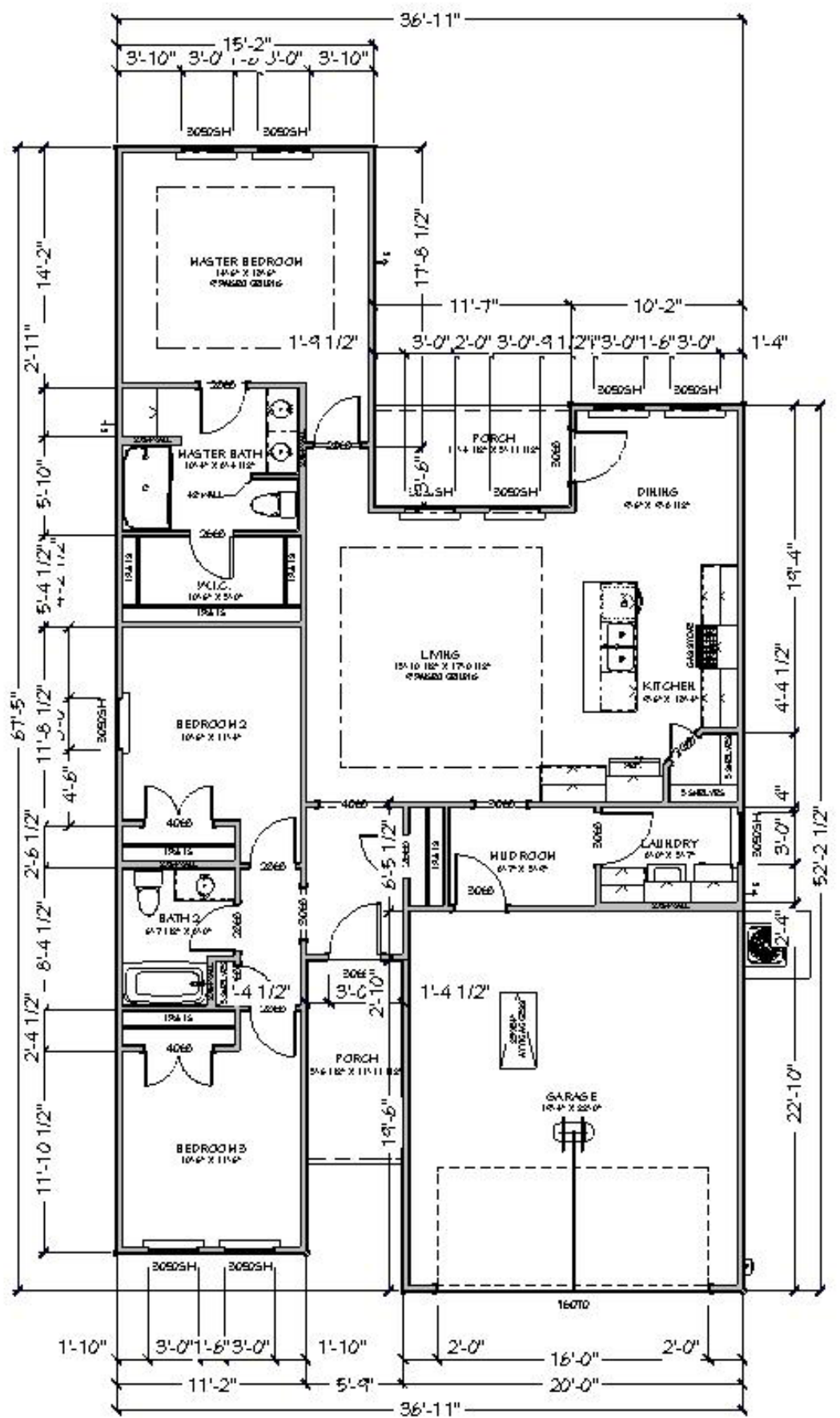
# Kingfisher



## Kingfisher – 1505 sf 3BR/2BA/2GA

Living: 1505 sf  
 Garage: 447 sf  
 Covered Porches: 139 sf  
 Total Concrete Area: 2091 sf

Starting at  
 \$209,500



### LYNNDEVELOPMENT

Phone: 361-972-0123  
 Email: info@lynnngroup.com  
 Website: pelicanplacetexas.com  
 Address: 312 Henderson St.,  
 Palacios, TX 77465

